

pouchitis

What is a pouchitis?

It is the inflammation of the pouch reservoir.

Does it happen to everyone?

No, it doesn't happen to everyone. About 25% of patients can develop it at 1 year, 35% at 3 years and 45% at 5 years.

What are the symptoms?

Common symptoms include increased stool frequency, urgency, bloody stools, and abdominal pain.

How is it treated?

It can at times self-resolve. Antibiotics are the treatment in most cases. Other medications may be needed if it becomes an ongoing issue.

Can it happen more than once?

Yes 60% of patients can have one recurrence and up to 20% of patients can develop persistent pouchitis.

cuffitis

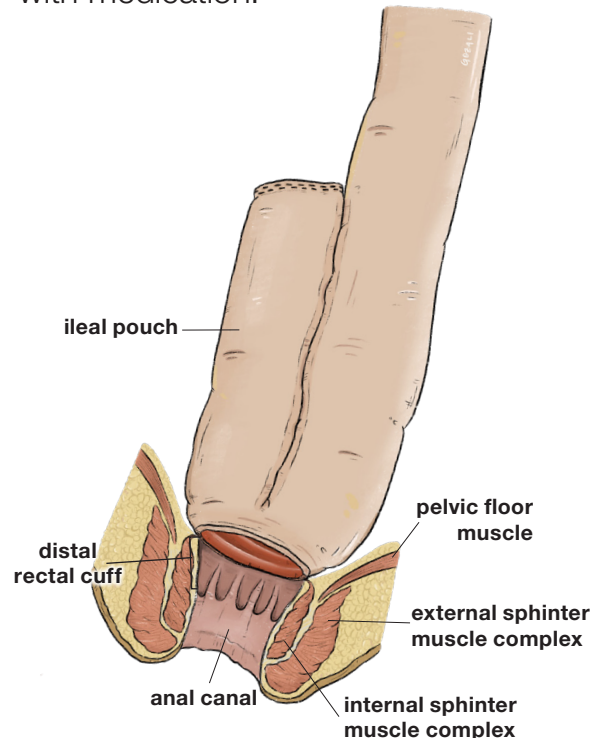
As part of the surgery, the pouch is sewn to a small section of rectum called the "cuff". For patients with ulcerative colitis, this remaining rectum may become inflamed with colitis, which is called "cuffitis".

What are the symptoms?

Can be similar to pouchitis symptoms.

How is it treated?

It is usually treated successfully with medication.



UCSF Benioff Children's
Hospitals
Oakland | San Francisco

Surgery for Ulcerative Colitis

Pediatric Surgery

1825 4th street
San Francisco, CA 94158
(415) 476-2538

747 52nd street
Oakland, CA 94609
(510) 428-3022

Pediatric Gastroenterology

1825 4th street
San Francisco, CA 94158
(415) 476-5892

744 52nd street
Oakland, CA 94609
(510) 428-3058

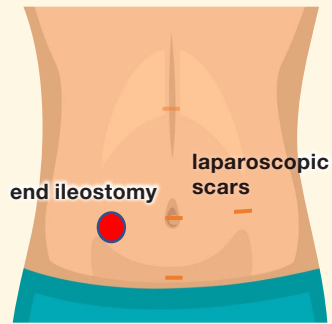
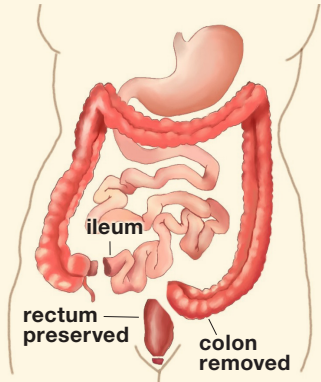


[UCSFBENIOFFCHILDRENS.ORG/IBD](https://www.ucsfbenioffchildrens.org/ibd)

stage 1

total colectomy

remove colon

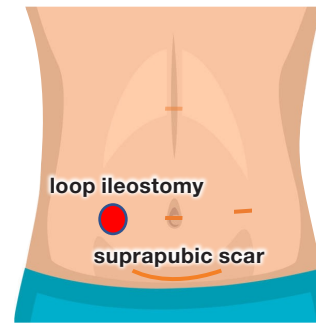


at least 2 months

stage 2

proctectomy and ileal pouch-anal anastomosis

remove the rectum and create ileal pouch

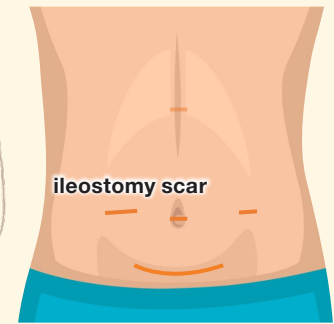


2 months

stage 3

ileostomy closure

reconnect the small bowel

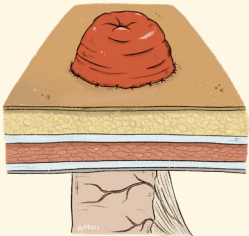


what to expect

Hospital stay: 5-10 days

Diet: Low residue diet for 2 weeks with slow re-introduction of fiber

end ileostomy

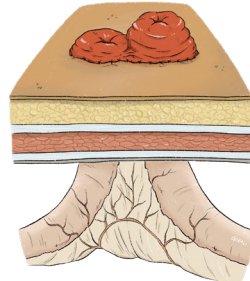


what to expect

Hospital stay: 4-5 days

Diet: Low residue diet for 2 weeks with slow re-introduction of fiber

loop ileostomy



what to expect

Hospital stay: 4-5 days

Diet: Regular diet

Activity: No heavy lifting (no more than 10 pounds, or about 1 gallon of milk), for 4 weeks after surgery

ileostomy scar



follow-up

At least yearly doctor's appointments, labs and possible surveillance endoscopies